



Canine Influenza

Canine influenza virus has been a hot topic with a lot of misinformation circulating. It is true that the virus that is causing illness in dogs is genetically similar to an equine influenza virus. The data indicates that the virus can be transmitted from dog to dog and was transmitted from horses to dogs and is well established in the dog population. It is important to remember that this virus has been around for years and there has never been a documented case of human infection with this virus.

The canine infection is not as deadly as some people have portrayed it. Canine flu can cause a respiratory disease that mimics a syndrome commonly known as "kennel cough." Dr. Cynda Crawford from the University of Florida College of Veterinary Medicine reports that although it is a new pathogen in dogs and nearly all dogs are susceptible to infection based on our knowledge about the virus to date, about 80 percent of them will have a mild form of the disease. The mild form of disease is characterized by cough and maybe some nasal discharge that will resolve over time with appropriate therapy. Only a minority of dogs, a very small number, will experience complications such as pneumonia. Approximately 80 percent of dogs infected will show symptoms, Dr. Crawford predicted. The symptoms include a moist, productive cough that ends in a gagging response that can persist for one to four weeks, despite treatment with

antibiotics or cough suppressants. Although antibiotics have no effect on the virus itself, they may prevent secondary bacterial infections. "Some dogs develop a thick, yellow discharge from the nose," she added. "a very few dogs will spike a high fever, between 105 to 107 F. They become depressed and weak with rapid, shallow breathing. This is likely to progress to pneumonia," which is where antibiotic treatment can help. The percent of dogs that succumb to the virus is between 5-8 percent.

Using common sense is the best recommendation to help prevent the spread of the virus. Dog owners who have a dog with a respiratory infection or that has just recovered from respiratory infection should keep the dog at home until a couple of weeks have elapsed to allow that dog to fully recover and to prevent transmission of a possibly contagious disease to other dogs.

If you have any questions or concerns about this or any other topic, please call CKVC.



Hutchinson Animal Shelter Scheduled to Open by End of 2005

The City of Hutchinson/ Reno County Humane Society and Animal Shelter is gearing up to open by end of 2005. If you have driven by the site of the new shelter, you've surely seen the construction go from foundation to near completion in the last few months. South of the prison on Severance, the great new addition to the community stands lonesome, but shortly it will be bustling with furry four-legged friends.

Some of the features included in the new shelter are indoor kennels for dogs. Funds are still being raised at this time to almost double the number of kennels for dogs. The Animal Advisory Board is working

toward new regulations and policies for the shelter. Of course, their top priority is making sure the animals receive the finest care.

The county and city of Hutchinson have been working together to make this new shelter work. Reno County donated funds to help with the construction costs. Hopefully with this great show of teamwork, the shelter will be able to provide for all animals within the area. We can only hope that this new shelter can minimize the vast number of animals being euthanized or abandoned because of overpopulation.

Sylvia Griggs, A Local Hero

Friday, May 27, a local dog-lover stepped forward and became a lifesaver one family will never forget.

About 7 o'clock that evening, Sylvia Griggs found a severely injured, young female Miniature Pinscher. She did not have any identification. Sylvia immediately brought her to CKVC and gave permission for her to be treated. It was discovered that the little Min-Pin had a microchip; however, it had never been registered with the company. The only thing AVID knew was which veterinarian had implanted the microchip. Sylvia then spent the next three hours tracking down the Min-Pin's regular veterinarian, who had to search his records to find the dog's identity. At that point, Sylvia began trying to contact Bailey's owners. They weren't at home, however, because they were frantically searching for their dog! Sylvia finally found them by going to their address and finding a neighbor who knew what had happened.

Bailey's owners were finally reunited with their little girl

and were able to give permission for the very extensive surgery needed to fix her wounds. Bailey had been attacked by two very large dogs and had run over two miles in escaping from them. She had suffered potentially fatal wounds to her chest and abdomen. Her surgery was three hours long, but today, thanks to Sylvia Griggs, Bailey is a happy, active, and healthy little dog!

The microchip Bailey's owners had placed was also key to saving her life. This identification stays in place even through serious trauma, and veterinarians and shelters routinely scan pets, even birds, for microchips. When the owner's information is properly registered with the company, finding it can be much simpler. However, AVID knows who the microchip was sold to, so the veterinarian can generally find the information. At CKVC, if a microchipped pet is found, we are available 24/7 to provide that information for any microchip we have placed.

Dr. Regehr, a former associate of CKVC, went to New Orleans to help with relief efforts from Hurricane Katrina.
To read more on her trip please visit our website at www.centraalksvet.com.

Got Chocolate?

Beware of the effects associated with dogs consuming chocolate. Chocolate contains caffeine and a chemical called theobromine, which is far more toxic to dogs and cats than it is to people. The fat content of chocolate foods can also be dangerous. Effects range from vomiting and restlessness to seizures and death.

How much is too much chocolate? This depends on the type of chocolate and the size of the dog. The darker and more bitter the chocolate, the more dangerous. The smallest amounts of theobromine that can be fatal include 4 to 10 ounces of milk chocolate or ½ to 1 ounce of baking chocolate for small dogs such as Chihuahuas and toy poodles. For medium size dogs, such as cocker spaniels and dachshunds, 1 to 1 ½ pounds of milk chocolate or 2 to 3 ounces of baking chocolate can be fatal, and for large dogs, which include collies and Labrador retrievers, the amounts of 2 to 4 ½ pounds of milk chocolate or 4 to 8 ounces of baking chocolate are potentially deadly. Compared to milk chocolate, baking chocolate has six to nine times more theobromine.

You should visit a veterinarian immediately after the chocolate has been consumed since preventing absorption of the chemicals is the safest treatment. He or she may need to induce vomiting, stabilize the animal's heart rate and respiration, give fluids to help the kidneys flush out the toxins, and control seizures. The stomach may possibly have to be pumped if the dog is comatose.

Several other foods that should be avoided include alcoholic beverages, avocado, coffee, fatty foods, macadamia nuts, moldy or spoiled foods, onions/onion powder, raisins and grapes, salt, yeast dough, garlic, and products sweetened with xylitol.

To avoid the associated risks, no amount of chocolate or foods previously listed should ever be available for any dog.

If you have concerns about your pet please give CKVC a call anytime - day or night.

Feline AIDS Virus

Feline AIDS is caused by infection with Feline Immunodeficiency Virus (FIV). While similar to human HIV, the disease is not transmitted from cats to humans or other pets. FIV is spread between cats primarily through bite wounds, but can be transmitted from a mother to her unborn kittens.

FIV may cause no symptoms for 10-15 years. Other times, early symptoms may include fever, loss of appetite, diarrhea, lethargy, and enlargement of the lymph nodes. More chronic infections may result in weight loss, sores of the mouth and eyes,

poor hair coat, cancer, and other chronic infections. Most cats who die from FIV actually die from other infections they are too weak to fight off. There is no cure for FIV.

Prevention of FIV includes testing new cats in a multi-cat household, limiting exposure of FIV-free, indoor cats to outdoor cats, isolating aggressive cats, and in certain cases, vaccination. Vaccination is appropriate for outdoor cats at high risk of exposure to FIV. However, vaccination causes a cat to test positive on all widely available FIV tests. This can result in a cat being eutha-

nized for suspected FIV infection when in fact, they have been vaccinated. In addition, it makes it very hard for veterinarians to determine if a cat contracts FIV despite vaccination. No vaccination can prevent disease 100%. For this reason, CKVC is offering the FIV vaccine, but not making it part of the regular well pet visit for cats. We strongly encourage microchipping of all FIV vaccinated cats, as this may prevent unnecessary euthanasia of an FIV vaccinated cat. Please call CKVC if you have any other questions regarding FIV or vaccination.

Arthritis in your Pet

December's cold temperatures will bring relief from fleas and ticks, but worsen one of the most common chronic health problems of dogs, and some cats: arthritis.

If you see your pet is slow getting up after laying down, and is worse in cold weather, one very likely cause is "Degenerative Joint Disease" or DJD. Commonly known as arthritis, it is the #1 cause of chronic pain in both humans and dogs. DJD affects 20% of all dogs. These are most commonly large breed dogs 8-13 years of age, but cats, small dogs, and younger dogs can also be affected.

The vast majority of DJD in pets is caused by either abnormal forces on normal joints (obesity, trauma) or normal forces on abnormal joints (cruciate rupture, hip dysplasia, old fractures). Initially, there is damage to the joint resulting in inflammation and pain. This pain causes decreased exercise, which results in loss of muscle tissue and weight gain. The joint damage combined with loss of muscle means loss of shock absorption and weight gain means increased forces. This creates more damage, inflammation and pain to the joint, and the cycle starts all over.

Prevention of DJD is ideal and can begin before birth. Selecting purebred breeding stock based upon good results from the PennHIP evaluation method can reduce the incidence and severity of hip dysplasia with resulting DJD in

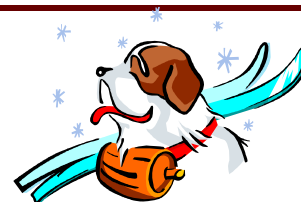
purebreds. After the pet is born, maintaining a healthy weight is the most effective and least expensive way to reduce or prevent DJD. Regular physical activity to maintain a healthy weight and strong muscle mass is highly recommended. Using joint protective diets (Science Diet j/d and Purina JM) as well as supplementing with glucosamine/chondroitin (Cosequin, Curaflex, Glycoflex) may also help prevent early damage.

DJD is diagnosed based upon clinical signs and x-rays of the affected areas). Symptoms of DJD include licking or biting at affected areas, lameness, loss of muscle, decreased interest in exercise, stiff at first then improves with a little exercise, worse in cold weather, lethargy, loss of appetite, restlessness, sleeplessness, and other behavioral changes.

Treatment is centered on trying to stop the progression of the disease and providing relief of pain so the pet may participate in regular activities. Absolutely critical to the treatment is weight management: fat dogs hurt more than skinny dogs. Joint protective diets and glucosamine/chondroitin supplements are highly recommended. Physical therapy should be used regularly when the pet is feeling well, but stopped on days when they feel worse.

Non-steroidal anti-inflammatory drugs such as Rimadyl, Etogesic, and Metacam as well as others should be used especially on the days when pain is

worse. Besides providing needed pain control, they can also



help decrease damage that is occurring at that time. These medications can have side effects that cause appetite loss, vomiting and diarrhea, but side effects can usually be managed by adjusting dosages, switching brands, or giving medications such as Pepcid that help protect the stomach.

Additional treatment options include alternative therapies such as acupuncture and massage. In advanced cases, surgery may provide substantial relief from symptoms, such as FHO (femoral head and neck ostectomy) or THR (total hip replacement) for hip dysplasia. Sometimes medications related to morphine may be used to provide pain relief. In dogs, we rarely have problems with addictions to these medications, but they still have to be prescribed carefully in accordance with law. Steroids are rarely used in dogs and cats for arthritis because rheumatoid arthritis that occurs in people is rare in pets. Steroids will dramatically increase the rate of muscle loss, further worsening the destruction/pain cycle.

If you have questions or concerns about your pet showing any of these symptoms, please don't hesitate to call or schedule an appointment with one of our veterinarians.



**CENTRAL KANSAS VETERINARY
CENTER**

515 W. Blanchard
South Hutchinson, KS 67505

Phone: 620-663-8387

Fax: 620-663-7990

Email: main@ckvc.kscoxmail.com

***Quality Care & Kindness, 24 hours,
7 days a week***

**Visit our website
www.centranksvet.com**

All of us at CKVC wish our clients and their animal companions a joy-filled holiday season and a healthy, happy 2006. We are grateful for the opportunity to care for your pets and grateful for the opportunity to meet many new friends, both two-legged and four, during the past year. We take very seriously the trust you place in us and will continue to work to earn your on-going trust.

We look back at some of the "good-byes" we have said to ill and elderly pets during the past year also. We remember these pets and know the holidays often stir poignant reminders of the furry family members who are no longer with us. We continue to appreciate the impact animals have on all of us with their unwavering love, zest for life, and forgiving spirits.

We also remember the animals who are subsisting without adequate care, food or shelter and vow to continue to do all we can to improve their lives.

Best Wishes from

Drs. Chambers, Howell, Taylor, Rockenbach, and Mountain

Jessica, Janessa, Carie, Debbie, Amanda, Miranda, Melissa and Lori

In Memory of Sam Peck



Sam, owned by Carson and Ann Peck, saved many lives through her participation in the CKVC blood donor program. Our heart-felt condolences go to the Peck family in the loss of Sam.